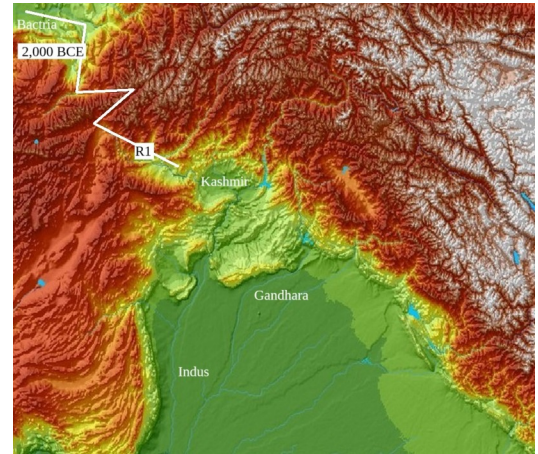


The European Immigrants, an Archeological View

by Potluri Rao In Seattle ©2018 (CC BY 4.0)

Much of the current Indian history was written by people who were ignorant of Indian geology and geography. Archeological evidence has a different story to tell.

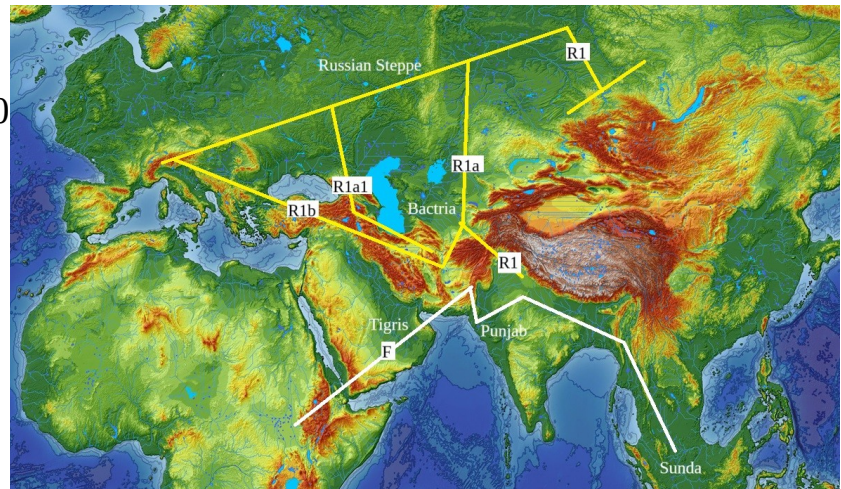
The map is a computer-generated landscape of Northwest India. The path from Bactria to Kashmir was discovered only recently by the Europeans. It was the only port of entry. The west side of India was an impregnable mountain range.



India consisted of two different worlds bifurcated by the Tropic of Cancer.

Hindu (DNA F) lived only to the south of the Tropic of Cancer for over 60,000 years. Europeans (DNA R1) lived only to the north of the Tropic of Cancer for less than 4,000 years.

There was no population to the north of the Tropic of Cancer before the global drought of 2,200 BCE. The R1 moved from Europe to Gandhara. Europeans (R1) evolved only recently, after the glacial melt, from the Stone Age culture.



Hindu (F) were rainwater people. They avoided the Himalayas, the Indus River, and Gandhara like the plague. They lived only in Peninsular India. They voluntarily moved from Ethiopia to India 100,000 years ago.

All the stories that venerated the Himalayas reflected the European (R1) culture. They had nothing to do with the Hindu (F) culture. In the fictional stories, the R1 falsely promoted themselves as Hindu. People in Gandhara were Europeans, not Hindus.